

SECURITY SOLUTIONS

Access Control



Johnson Controls is the global leader in smart buildings, efficient energy solutions, and integrated infrastructure.



Introduction

Johnson Controls provides innovative access control security solutions for businesses around the world. We accomplish this through our comprehensive portfolio of brands and deliver quality through a network of outstanding partners and trusted integrators. Johnson Controls has been serving communities and their businesses for well over a century. Today, we develop, install, and service a full range of access control needs for businesses of all shapes and sizes.

Johnson Controls Security Products, brands, addresses four key security needs within businesses:



Access Control



Access Control Features
& Integrations



Cloud Options

Global Sustainability Changeloger Recipient

Johnson Controls was recognized for the 2022 Global Sustainability Changeloger award. The Sustainability award was for the significant societal impact Johnson Controls OpenBlue Products are having on boosting sustainability in buildings, improving ESG scores and enabling data-driven decision-making by customers. In addition to being named Sustainability Changeloger, JCI was named a finalist in two additional Partner of the Year categories - U.S. Education and global Independent Software Vendor (ISV), Business



This is how we power your mission

Integrated Security Solutions

Johnson Controls' integrated security systems empower you to protect your business with a holistic solution that comprises video surveillance, access control, and intrusion detection, from one interface, either remotely or on-site.

Diverse Infrastructure

Many companies operate in more than one building - from warehouses to parking lots, to multi-location businesses. It's critical to protect each of these locations with their specific security needs.

Cybersecurity

Your company's data is valuable and therefore can't be left vulnerable. Johnson Controls deploys a host of features such as end-to-end encryption of communications and video, rigorous enforcement of operator permissions and passwords, and much more, to ensure your business's confidential information is secure.

Utilizing Cloud Technologies

Enabling cloud architecture can provide your business with faster intelligence, more scalable operations, and streamlined costs. Johnson Controls offers both hosted and managed cloud access control.

AI / Analytics

Johnson Controls delivers security solutions with enhanced intelligence that take much of the leg work away from operators. Through first line filtering of data and presenting only relevant information when a situation occurs, JCI's artificial intelligence and advanced analytics evaluate information to help operators make a swift and informed decision

System Continuity for 24/7 Security

Permanent security is critical if a power outage occurs. A host of features are inherent within our security platforms to provide continuity and mitigate risk. This can be as simple as Network Video Recorders with dual power supplies and operating systems to RAID storage to protect recorded video. With built-in methods of redundancy and flexible system architecture, your system will remain operational 24/7.

Why enhance your business's security?



In 2019, a survey by HID estimated that 54% of businesses have upgraded or will upgrade to a mobile access control system in the next 3 years.



63 percent of companies have implemented a biometric system or plan to implement one.



50% of IT managers are currently using cloud-based video surveillance or access control solutions.

With Johnson Controls, there are no barriers to securing your business. We provide commercial access control tailored to your needs.

Global Industries



Aviation



Healthcare



Commercial and Industrial



Education



Retail



Data Centers and IT Services

Access Control

Access control is a powerful component of physical security. Johnson Controls offers flexible solutions, innovative technologies, and intelligent monitoring to improve the efficiency and security of business operations. At every company, there are numerous activities occurring at the same time - Johnson Controls' access control solutions will provide businesses with the ability to handle unpredictable events simultaneously. Johnson Controls provides readers and credentials, door controllers, and security and visitor management software to leverage effective access control solutions.



Readers & Credentials

JCI's access control systems provide reader and credential flexibility to find what best suits the needs of your business. While traditional "card swipe" methods like using key fobs and smart cards are still used most frequently, JCI also provides options. For mobile credentials, biometric access, and long-range readers used for vehicles. A broad range of devices allow for all doors of the business buildings to be covered. Card readers can also provide a variety of analytics to track throughout the work day.

Top Features:

1. Mix and match different styles of readers and credentials based on business's needs across the building.
2. Utilize JCI-manufactured readers and credentials, or readers and credentials made by other leading security companies.
3. Ability to generate specific data related to door activity, card holder usage, and safety information
4. Johnson Controls' readers can enable bluetooth to utilize mobile credentials.



Door Controllers/Panels

JCI's controllers and panels consist of enterprise-level features that can support one door to thousands of doors, including readers, wireless locks, and more. Our hardware and software are cyber-hardened to mitigate cyber risks, whether your access solution is comprised of simple, low risk locks to high risk and high assurance readers.

Top Features:

1. IP-ready controllers can support one reader to 32 readers and manage up to 500,000 cardholders in local memory.
2. JCI utilizes a "no panel left behind" philosophy for panels: even after hardware for a door controller has been updated or improved, the product that you purchased will continue to be supported by our software and will function until you decide to update.
3. Includes built-in ethernet and WI-FI used to program standalone systems.
4. Smart phone configuration provides easier control and access for higher security situations.
5. Regardless of the number of different solutions used, door controllers/panels are managed and administered from one access control software that connects all the doors.

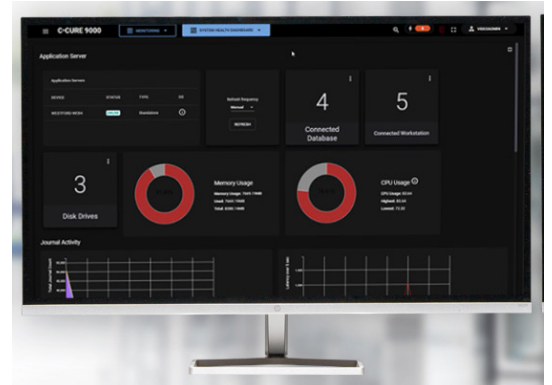


Security Management Software

JCI's robust access control software is first-class in the security industry. It enables companies to monitor, review, and grant or remove permission to visitors or employees. With built-in features such as visitor and workflow management, advanced door monitoring, maps, and deep integrations with video, fire, intrusion, and building management, JCI creates one powerful and holistic interface that works together seamlessly. Johnson Controls' Security Management Software provides flexibility and scalability with Hosted and Managed Access Control services delivering higher efficiency, and a lower cost of entry and ownership. Johnson Controls' software doesn't require multiple databases, which means credentials, operator permissions and all other elements of an access system are managed together, removing the complexity and duplication of work.

Top Features:

1. Provides robust, built-in features and analytics for reporting visitor management such as health dashboards and maps.
2. Includes AES (Advanced Encryption Standard) 256, making it our most highly encrypted software offered.
3. Creates fully integrated security solutions for a well-rounded protection of your business.
4. JCI software includes mustering reporting to check on the status of employees in any situation.
5. Guard tours enables security personnel to designate a list of readers or inputs that must routinely be checked.



Additional Access Control Features

Biometrics

Johnson Controls' biometric access control systems deliver unobtrusive, personalized security for your building, facility, or campus. This type of access control is ideal for highly restrictive environments or facilities with rigorous compliance requirements that demand particularly robust access control and security systems. We use sophisticated biometrics identification scanners and door locks to recognize fingerprints, irises, and faces, which can work in conjunction with access control cards and/or keypad codes.

Top Features:

1. Biometric data cannot be shared or copied, heightening the security of your facility.
2. Biometrics solutions can be easily integrated into an existing access control system.
3. Easy to manage and administer on an individual user basis.
4. Securely restrict access to sensitive operations, perimeters, and assets.
5. Compliant with certain federal requirements.



Advanced Visitor Management

Johnson Controls leverages comprehensive and automated visitor management as a core component of security and event management platform. Personnel records can be assigned as requester and/or approver roles and process clearance requests using customized rules and workflows. Assigned approvers are able to approve or deny requests, moving administrative tasks from security officers to individuals within the building and improving operational efficiency.

Top Features:

1. A self kiosk option and optional stand offerings that connect through a portal create self-sufficient visitor management
2. Specific doors can be programmed to automatically initiate.
3. The portal creates an audit trail that documents all access approvals and requests, which is key for compliance controls.
4. Offers multi-factor authentication (PIN, biometrics, etc.) to confidently identify and verify credentials.
5. Scalable enterprise capability allows up to 20 million credentials and 200,000 doors.



Wireless Locks

Johnson Controls' wireless locks provide a smart and easy-to-use access control solution on entrances, exits, and secondary doors. The updated technology enables bi-directional communication between wireless readers and systems controlling parking gates, turnstiles, electromagnetic locks, electric strikes, and as well as many other electronic devices. Wireless locks offer multiple dynamic features at a low cost of installation.

Top Features:

1. Provides audit trail within software.
2. Alerts sent to dedicated security personnel.
3. Easier to control user's access by adding or deleting users as needed.
4. Lockdown can be issued instantly.
5. Wireless Locks provide cost savings and conveniences by removing the need to duplicate or re-key doors and then maintain who has which keys.



Lockdown and Mass Notification

Lockdown allows businesses to secure any door, whether in schools, places of worship, safe rooms, or commercial buildings. Lockdown enables you to connect up to 20 locks to a single panel, and the material is designed to work on both indoor and outdoor doors. The device can always be manually locked or unlocked at any unit or via an optional egress button. Mass notification systems facilitate communication with large groups that may be impacted by an incident (fire, shooting, security breach) or a routine event (such as a facility closing, traffic, weather).

Top Features:

1. Mass Notification inputs can include duress buttons, call boxes, intrusion alarms and gunshot detection.
2. Such inputs trigger outputs like RSS feed out, text messages, email and LED displays to raise awareness about the situation.
3. Users can manage lockdown of one or numerous buildings from any location.
4. Specific zones in buildings or a business campus can be secured in groups.
5. Police, guard stations, and SOC instantly receive calls and live video footage.

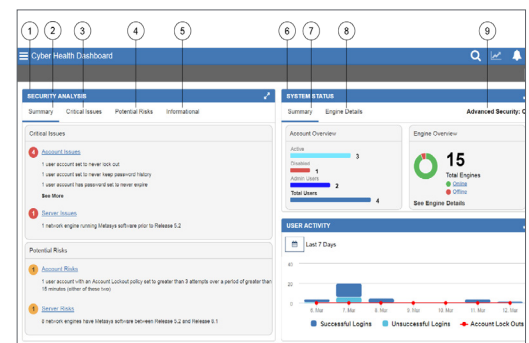


Health Monitoring Dashboards

Health monitor dashboards enable maximum system uptime to help ensure your business is protected 24/7. This feature proactively runs in the background to identify system and equipment issues such as communication errors, recording malfunctions, camera failures and recording bandwidth shortages. Once an issue is identified, the feature alerts Johnson Controls Remote Service Solutions team to quickly diagnose and solve the problem.

Top Features:

1. Helps identify technical issues and equipment failures before an issues arises.
2. Supports system uptime by sending near real-time health alerts to Remote Services Solutions team.
3. Offers greater operational efficiencies by reducing the number of on-site service appointments.
4. Streamlines service requests and facilitates faster resolution times.
5. Provides monthly system health status reports.



Utilizing Access Control Cloud Technologies



Cloud Options

Rather than installing and maintaining an entire access control solution on your business's premise, you can host your data in the cloud. With Johnson Controls' cloud access control options, you're able to remove servers on-site and therefore significantly reduce operating costs. Monitor doors and grant or revoke access for one building or multiple buildings, all from one browser or mobile device. We offer hosted and managed cloud access control to provide your business with options based on preference. In hosted access control, JCI's servers host the system off-premise and JCI manages the hardware and software updates - this all happens remotely, allowing you to simply log into your account online to manage the system. With a hosted solution, you're still responsible for handling the administration of the system. This is not the case with a managed access control solution, where in addition to housing and maintaining your access system, JCI will also manage the day-to-day administrative needs of the system.

Top Features:

1. Offers ACaaS (access control as a service) which streamlines cost with lower cost-of-entry and lower cost-of-ownership.
2. Can be managed from any computer or mobile device.
3. With its ease of use, cloud access control provides flexibility and scalability to your business.
4. Quickly and securely assign and revoke access control credentials.
5. Issued security through integrated two-factor authentication.



Get in touch with our sales team
over the phone!



(866) 261-4135